



INTERNATIONAL TRADE COMMISSION
MINISTRY OF ECONOMIC AFFAIRS

8F., No.317, Songjiang Rd., Jhongshan
District, Taipei City 10483,
Taiwan(R.O.C.)

TEL: 886-2- 2506-6670, ext. 503
FAX: 886-2- 25029557
e-mail : itc@mail.moeaitc.gov.tw

MOEAITC-ID-10200025280

Date: Nov. 8, 2013

RE: Final Injury Investigation of the Antidumping Case on Certain
Cold-rolled Stainless Steel Products

COMPANY NAME:

ADDRESS:

TELEPHONE NUMBER:

FACSIMILE NUMBER:

To whom it may concern:

In order to proceed with the final injury investigation of the antidumping case on Certain Cold-rolled Stainless Steel Products from China and Korea, the International Trade Commission (ITC) of the Ministry of Economic Affairs is hereby sending you this summarized English inquiry along with the original copy of our official letter in Chinese.

Please provide us with the following details, and their public version for public reading, of subject product for the years 2009 through 2012 on an annual basis and for the first three quarters of 2013:

1. Production
2. Utilization of capacity
3. Inventory
4. Volume exported to Taiwan, with both FOB and CIF prices
5. Volume exported to third countries, with FOB prices
6. Home market shipments

7. Data projected concerning the above items for the fourth quarter of 2013 and the year of 2014.

Furthermore, please provide us with some brief introductory materials and annual reports of your company in English, which include information concerning company structure, manufacturing process, and product types.

If the information requested has been provided to us in the preliminary investigation, you may just update the data to the third quarter of 2013.

In order to make final injury determination within 40 days, which is specified in our regulation, please return the required data and materials to us no later than **November 25, 2013**, by fax, airmail, or e-mail.

If you have any questions about this case, please contact the following correspondents.

Ms. Lin (Su-chuan Lin)

Tel: 886-2-2506-6670 ext. 503

Ms. Chang (Pi-feng Chang)

Tel: 886-2-2506-6670 ext. 521

Sincerely yours,



Pi-Cheng Liu

Director, Investigation Division

Enclosure

Cc:

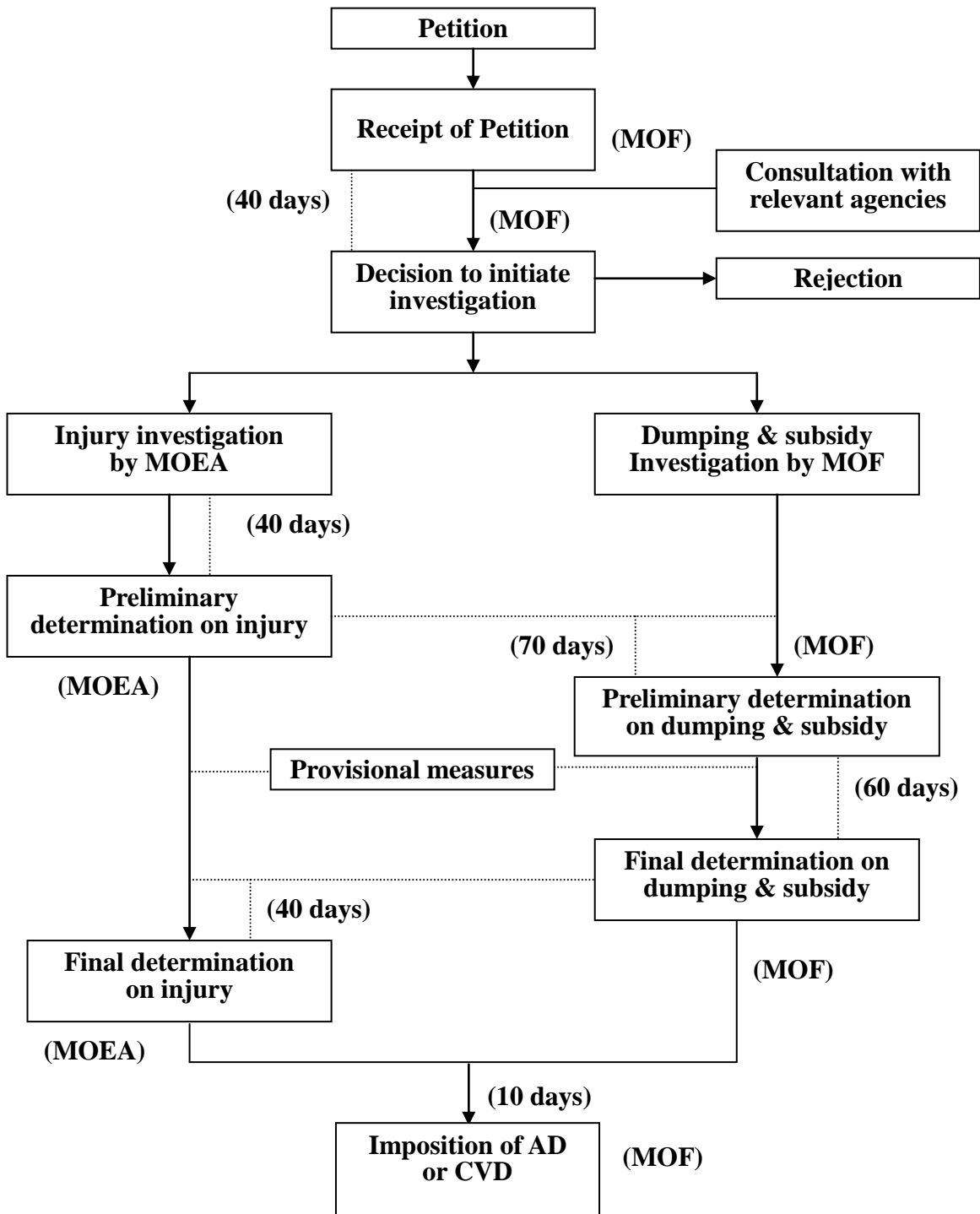
Ministry of Foreign Affairs

Economic Division, Taipei Mission in Korea

Korean Mission in Taipei

Korea Iron & Steel Association

ANTIDUMPING AND COUNTERVAILING DUTY SYSTEM



* Days between events shown above may be extended up to one half longer, if necessary.