



*INTERNATIONAL TRADE COMMISSION  
MINISTRY OF ECONOMIC AFFAIRS*

8F., No.317, Songjiang Rd., Jhongshan  
District, Taipei City 104070,  
Taiwan(R.O.C.)

TEL: 886-2- 2506-6670, ext. 511  
FAX: 886-2- 25029557  
e-mail : itc@moeaitc.gov.tw

MOEAITC-ID-11202000030

Date: January 6, 2023

RE: Final Injury Investigation of the Antidumping Case on Float Glass,  
in Sheets

COMPANY NAME:

ADDRESS:

TELEPHONE NUMBER:

FACSIMILE NUMBER:

E-mail:

To whom it may concern:

In order to proceed with the final injury investigation of the antidumping case on Float Glass, in Sheets from Malaysia, Indonesia and Thailand, the International Trade Commission (ITC) of the Ministry of Economic Affairs (MOEA) is hereby sending you this summarized English inquiry along with the original copy of our official letter in Chinese.

Please provide us with the following details, and their public version for public reading, of Float Glass, in Sheets for the years of 2017 through 2022 on an annual basis:

1. Production
2. Utilization of capacity
3. Inventory

4. Volume exported to Taiwan, with both FOB and CIF prices
5. Volume exported to third countries, with FOB prices
6. Home market shipments
7. Data projected concerning the above items for the year of 2023.

Furthermore, please provide us with some brief introductory materials and annual reports of your company in English, which include information concerning company structure, manufacturing process, and product types.

If the information requested has been provided to us in the preliminary injury investigation, you may just update the data to the end of 2022.

Please return the requested data and materials to us no later than **February 21, 2023**, by fax, airmail, or e-mail.

All known interested parties will be kept informed about the progress of the investigation. At the same time, the ITC will keep updating the investigation proceeding at its website:

[https://www.moeaitc.gov.tw/ITC/english/case/wfrmRelatedInfo.aspx?menu\\_id=144](https://www.moeaitc.gov.tw/ITC/english/case/wfrmRelatedInfo.aspx?menu_id=144), or "Related Information by Case" under "Investigation Cases" at the front page of our website.

If you have any questions about the injury investigation of this case, please contact the following correspondents.

Ms. Chou (Ming-Hui Chou)

Tel: 886-2-2506-6670 ext. 511

Mr. Lin (Hsin-Shan Lin)

Tel: 886-2-2506-6670 ext. 513

Sincerely yours,



Pi-Cheng Liu

Director, Investigation Division

Enclosure

Cc:

Ministry of Foreign Affairs

Permanent Mission of the Separate Customs Territory of Taiwan,  
Penghu, Kinmen and Matsu to the World Trade Organization

Malaysian Friendship and Trade Centre, Taipei

Economic Division, Taipei Economic and Cultural Office in Malaysia

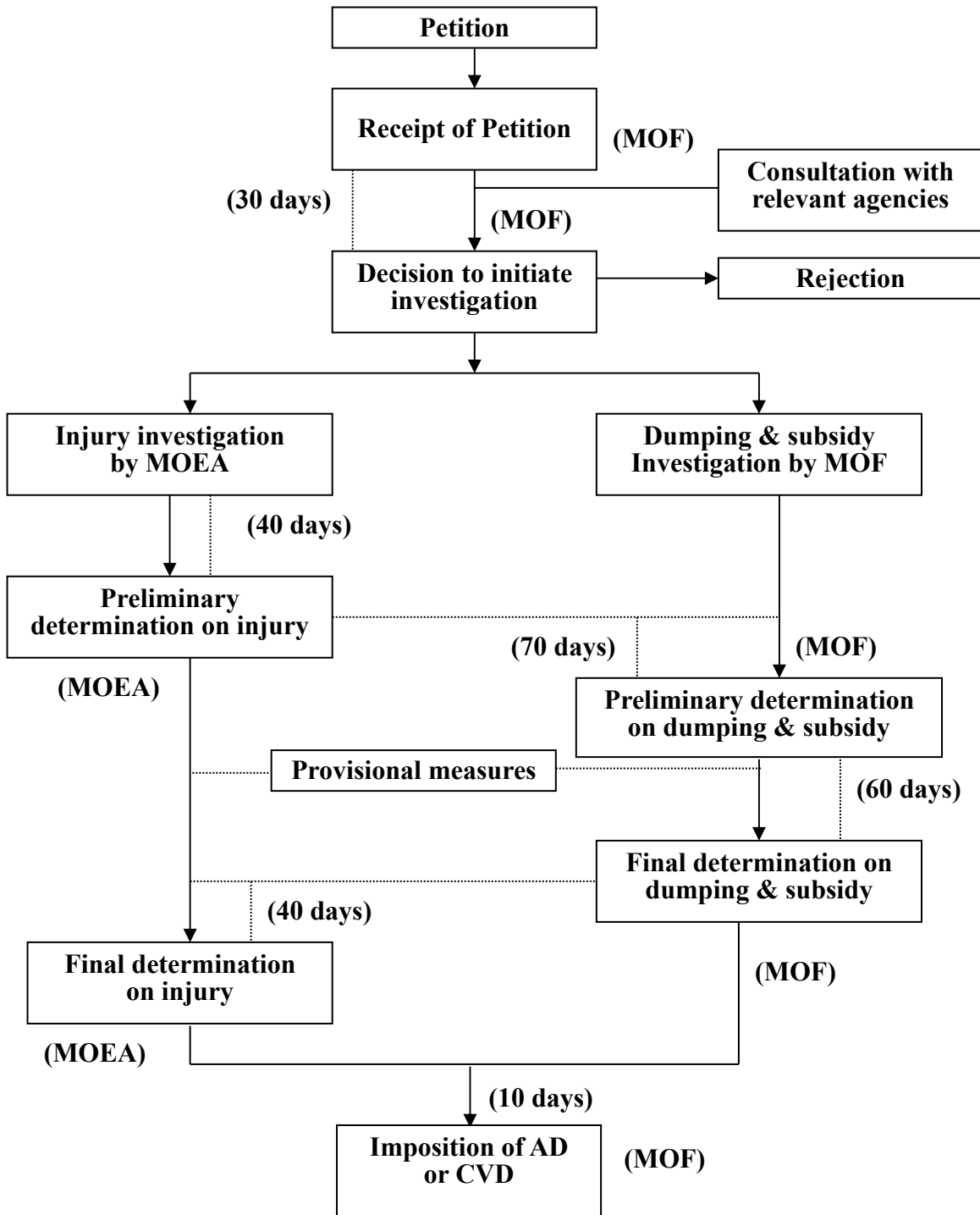
Indonesian Economic and Trade Office to Taipei

Economic Division, Taipei Economic and Trade Office, Jakarta,  
Indonesia

Thailand Trade and Economic Office

Economic Division, Taipei Economic and Cultural Office in Thailand

# ANTIDUMPING AND COUNTERVAILING DUTY SYSTEM



\* Days between events shown above may be extended up to one half longer, if necessary.