



*INTERNATIONAL TRADE COMMISSION
MINISTRY OF ECONOMIC AFFAIRS*

8F, No.317, Songjiang Rd., Jhongshan
District, Taipei City 10483,
Taiwan(R.O.C.)

TEL: 886-2- 2506-6670, ext. 513
FAX: 886-2- 25029557
e-mail : itc@moea.gov.tw

MOEAITC-ID-10500004950
Date: February 26, 2016

RE: Antidumping Case on Carbon Steel Plate

COMPANY NAME:

ADDRESS:

TELEPHONE NUMBER:

FACSIMILE NUMBER:

To whom it may concern:

In compliance with the decision of the Ministry of Finance (MOF) to initiate the preliminary investigation of the antidumping case on Carbon Steel Plate from Brazil, Mainland China, India, Indonesia, Korea and Ukraine, the International Trade Commission (ITC) of the Ministry of Economic Affairs is hereby sending you this summarized English inquiry along with the original copy of our official letter in Chinese.

Background

China Steel Corporation on behalf of the domestic industry filed a petition on December 10, 2015 with the MOF to impose antidumping duties on Carbon Steel Plate from Brazil, Mainland China, India, Indonesia, Korea and Ukraine. The MOF determined to initiate the investigation and transferred this case to the ITC on February 23, 2016 for preliminary injury investigation. The ITC, in accordance with Article 11 and Article 19 of the Regulations Governing the

Implementation of the Imposition of Countervailing and Anti-Dumping Duties, therefore instituted the preliminary injury investigation on February 24, 2016. A copy of the flowchart of the investigation procedure is enclosed. The Regulations Governing the Implementation of the Imposition of Countervailing and Anti-Dumping Duties can be found on the website:

<http://law.moj.gov.tw/Eng/LawClass/LawAll.aspx?PCode=G0350034&programid=256&pagestyle=2>

Subject Product: Carbon steel plate, including, without limitation, other flat-rolled products of iron or non-alloy steel, hot-rolled, not in coil, not clad, plated or coated, of a thickness of 6mm or more.

Reference CCC Codes: 72085110100, 72085110208, 72085110306, 72085120000, 72085130008, 72085140006, 72085210207, 72085220205, 72085230203, 72089010005, 72089021002, 72089030001, 72089040009, 72111410101, 72111410209, 72111410307, 72111420207, 72111430205, 72111440203, 72254000908

Requesting Certain Information

Please provide us with the following details, and their public version for public reading, of Carbon Steel Plate for the years 2011 through 2015 on an annual basis:

1. Production
2. Utilization of capacity
3. Inventory
4. Volume exported to Taiwan, with both FOB and CIF prices
5. Volume exported to third countries, with FOB prices
6. Home market shipments
7. Data projected concerning the above items for the year of 2016.

Furthermore, please provide us with some brief introductory materials and annual reports of your company in English, which include information concerning company structure, manufacturing process, and

product types.

In order to make preliminary injury determination within 40 days, which is specified in our regulation, please return the required data and materials to us no later than March 11, 2016, by fax, airmail, or e-mail. Although failing to submit the required data on time in the preliminary injury investigation phase shall not be prejudicial to the definitive injury determination, your cooperation would be advantageous to your company and is therefore strongly encouraged.

If you have any questions about this case, please contact the following correspondents.

Ms. Lin (Hsin-Shan Lin) Tel: 886-2-2506-6670 ext. 513

Ms. Liang (Ming-Chu Liang) Tel: 886-2-2506-6670 ext. 504

Sincerely yours,



Pi-Cheng Liu
Director, Investigation Division

Enclosure

Cc:

Ministry of Foreign Affairs

Permanent Mission of the Separate Customs Territory of Taiwan,
Penghu, Kinmen and Matsu to the World Trade Organization

Commercial Office of Brazil to Taipei

Economic Division, Escritorio Economico e Cultural de Taipei no
Brasil

India-Taipei Association

Economic Division, Taipei Economic and Cultural Center in India

Indonesian Economic and Trade Office to Taipei

Economic Division, Taipei Economic and Trade Office, Jakarta,

Indonesia

Korean Mission in Taipei

Korea Iron & Steel Association

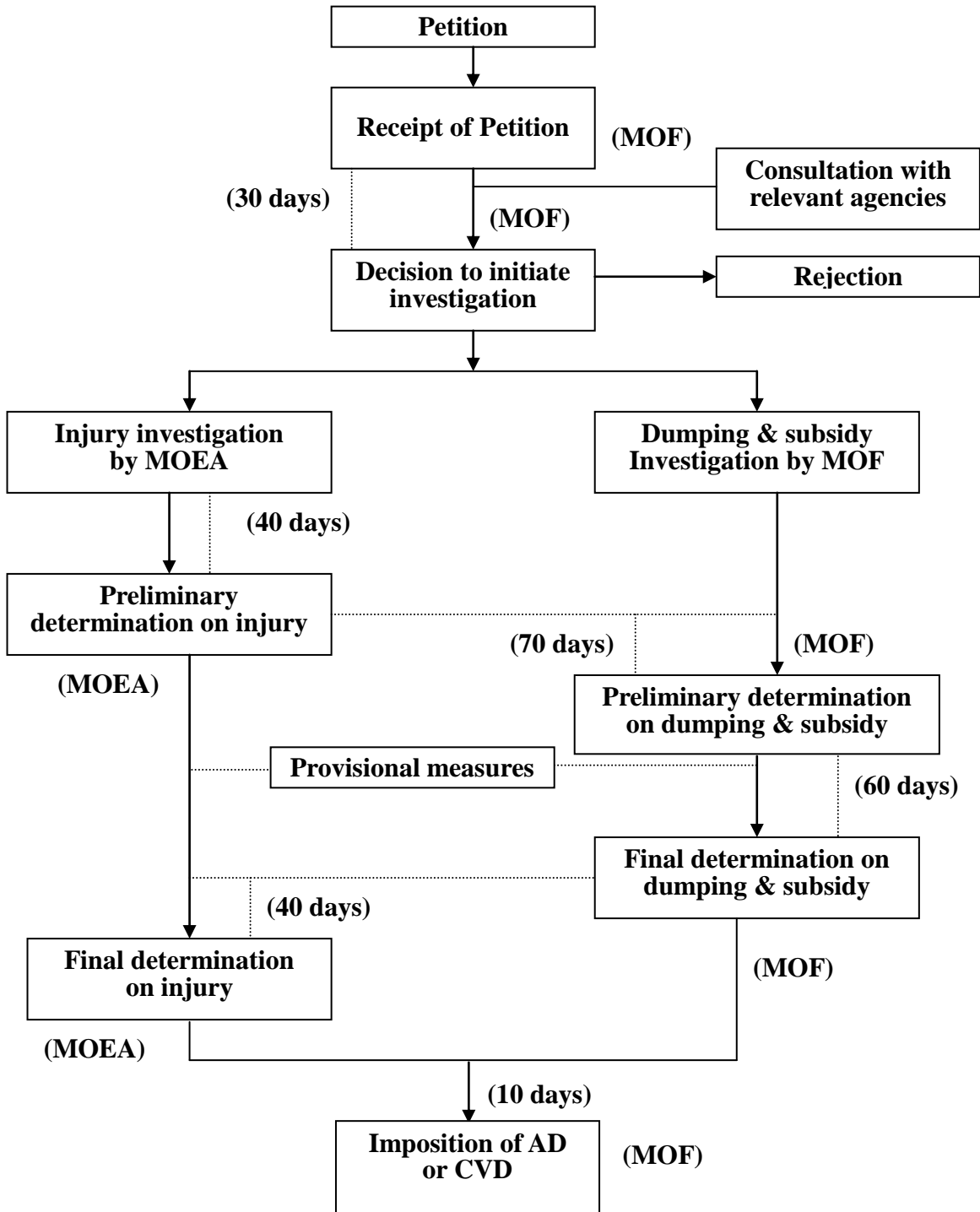
Economic Division, Taipei Mission in Korea

Taiwan Trade Center, Kyiv

Economic Division, Representative Office in Moscow for the Taipei-

Moscow Economic and Cultural Coordination Commission

ANTIDUMPING AND COUNTERVAILING DUTY SYSTEM



* Days between events shown above may be extended up to one half longer, if necessary.