



*INTERNATIONAL TRADE COMMISSION
MINISTRY OF ECONOMIC AFFAIRS*

8F., No.317, Songjiang Rd., Jhongshan
District, Taipei City 10483,
Taiwan (R.O.C.)

TEL: 886-2-2506-6670, ext.301
FAX: 886-2-25029557
e-mail: itc@moea.gov.tw

MOEAITC-ID-10500024910

Date: Oct. 24, 2016

RE: Final Injury Investigation of the Antidumping Case on Certain
Flat-rolled Steel Products, Plated or Coated with Zinc or Zinc-
Alloys

COMPANY NAME:

ADDRESS:

TELEPHONE NUMBER:

FACSIMILE NUMBER:

To whom it may concern:

In order to proceed with the final injury investigation of the antidumping case on certain flat-rolled steel products, plated or coated with zinc or zinc-alloys from Mainland China and Korea, the International Trade Commission (ITC) of the Ministry of Economic Affairs is hereby sending you this summarized English inquiry along with the original copy of our official letter in Chinese.

Please provide us with the following details, and their public version for public reading, of subject product for the years 2011 through 2015 on an annual basis and for the first three quarters of 2015 and 2016:

1. Production
2. Utilization of capacity
3. Inventory
4. Volume exported to Taiwan, with both FOB and CIF prices
5. Volume exported to third countries, with FOB prices

6. Home market shipments

7. Data projected concerning the above items for the fourth quarter of 2016 and the year of 2017.

Furthermore, please provide us with some brief introductory materials and annual reports of your company in English, which include information concerning company structure, manufacturing process, and product types.

If the information requested has been provided to us in the preliminary investigation, you may just update the data to the third quarter of 2016.

The interested parties will be kept informed about the progress of the investigation. At the same time, the ITC will keep updating the investigation proceeding at its website: http://www.moeaitc.gov.tw/ITC/english/case/wfrmRelatedInfo.aspx?menu_id=144&caseid=83, or “Related Information by Case” under “Investigation Cases” at the front page of our website.

Please return the required data and materials to us no later than **December 2, 2016**, by fax, airmail, or e-mail.

If you have any questions about this case, please contact the following correspondents.

Ms. Huang (Ju-yun Huang)	Tel: 886-2-2506-6670 ext. 301
Ms. Tsai (Chia-wen Tsai)	Tel: 886-2-2506-6670 ext. 525
Ms. Chang (Pi-feng Chang)	Tel: 886-2-2506-6670 ext. 521

Sincerely yours,



Pi-Cheng Liu
Director, Investigation Division

Enclosure

Cc:

Ministry of Foreign Affairs

Permanent Mission of the Separate Customs Territory of Taiwan, Penghu,

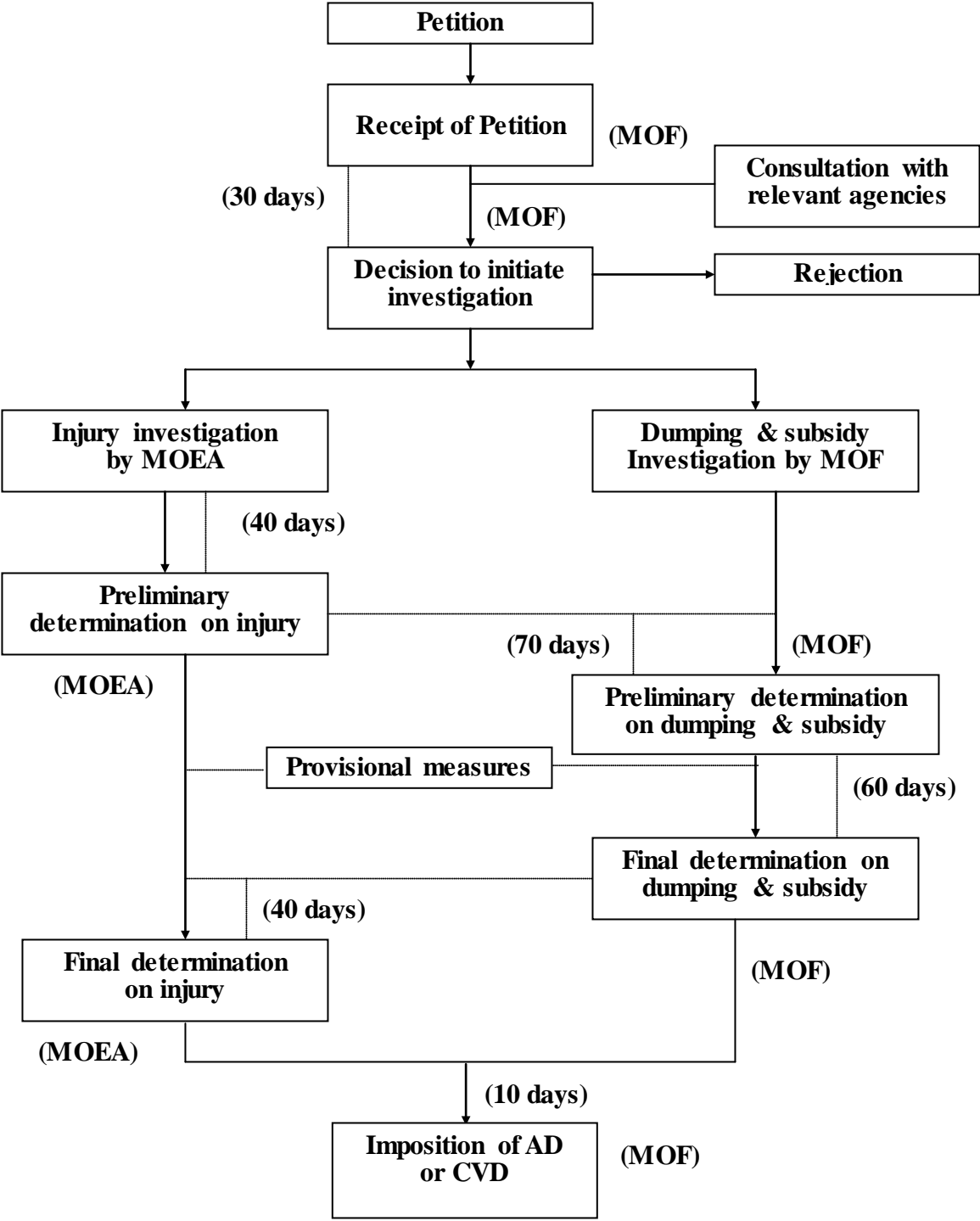
Kinmen and Matsu to the World Trade Organization

Economic Division, Taipei Mission in Korea

Korean Mission in Taipei

Korea Iron & Steel Association

ANTIDUMPING AND COUNTERVAILING DUTY SYSTEM



* Days between events shown above may be extended up to one half longer, if necessary.