

Summary of the Notice on Requesting Information Regarding the Antidumping Case on Portland Cement and its Clinker from Vietnam

Background

Taiwan Cement Manufacturers' Association on behalf of the domestic industry filed a petition with the Ministry of Finance (MOF) to impose antidumping duties on Portland Cement and Portland Cement Clinker from Vietnam. On August 8, 2024, the MOF determined to initiate the investigation and transferred this case to the Ministry of Economic Affairs (MOEA) for preliminary injury investigation. The International Trade Administration (TITA) of the MOEA, in accordance with Article 11 and Article 19 of the Regulations Governing the Implementation of the Imposition of Countervailing and Anti-Dumping Duties, therefore instituted the preliminary injury investigation on August 9, 2024.

Description of subject product:

1. Product concerned: Portland Cement and Portland Cement Clinker.
2. Scope of Product concerned:
 - (1) Portland Cement -- a hydraulic cement that contains clinker (primarily composed of calcium silicates), no more than 7 percent calcium sulfate (gypsum), no more than 5 percent natural limestone, and no more than 5 percent inorganic

processing additions (namely, water-quenched blast furnace slag, fly ash, or siliceous materials).

(2) Portland Cement Clinker -- an intermediate product in the production process of Portland cement, essentially composed of calcium silicates and containing the following chemical composition:

- I. Calcium oxide (CaO) : 57 to 72 percent, inclusive.
- II. Silicon dioxide (SiO₂) : 15 to 28 percent, inclusive.
- III. Aluminum oxide (Al₂O₃) : 1 to 11 percent, inclusive.
- IV. Ferric oxide (Fe₂O₃) : 1 to 11 percent, inclusive.

(3) The Portland Cement having any of the following characteristics is outside of, and/or specifically excluded from, the scope of this investigation :

- I. The ferric oxide (Fe₂O₃) content is less than or equal to 0.5 percent.
- II. Addition of white or other colored dyes.
- III. The 3-day compressive strength is greater than or equal to 24 MPa (245 kgf/cm²), and the tricalcium aluminate (C₃A) content is greater than or equal to 12 percent.
- IV. The 3-day heat of hydration is less than or equal to 200 kJ/kg (50 cal/g).
- V. The sulfur trioxide (SO₃) content is less than or equal to 2.3 percent, and the sulfate expansion at 14 days is less than or equal to 0.04 percent.
- VI. Air-entraining Addition.

3. Reference CCC Codes: 2523.29.90.00.2及2523.10.90.00.3 ◦

Requesting Information from Exporters

Please provide us with the following details, and their public version for public reading, of Portland Cement and Portland Cement Clinker for the years 2019 through 2023 on an annual basis and for the first half of 2023 and 2024:

1. Production
2. Utilization of capacity
3. Inventory
4. Volume exported to Taiwan, with both FOB and CIF prices
5. Volume exported to third countries, with FOB prices
6. Home market shipments
7. Data projected concerning the above items for the year of 2024.

Furthermore, please provide us with some brief introductory materials and annual reports of your company in English, which include information concerning company structure, manufacturing process, and product types.

In order to make preliminary injury determination, please provide us with these required data and materials no later than August 23, 2024, by fax, airmail, or e-mail. Although failing to submit the required data on time in the preliminary injury investigation phase shall not be prejudicial to the definitive injury determination, your cooperation would be advantageous to your company and is therefore strongly encouraged.

All known interested parties will be kept informed about the

progress of the investigation. At the same time, the TITA will keep updating the investigation proceedings at its website: <https://gov.tw/FJE>, or “Related Information by Case” under “Investigation Cases” at the front page of our website.

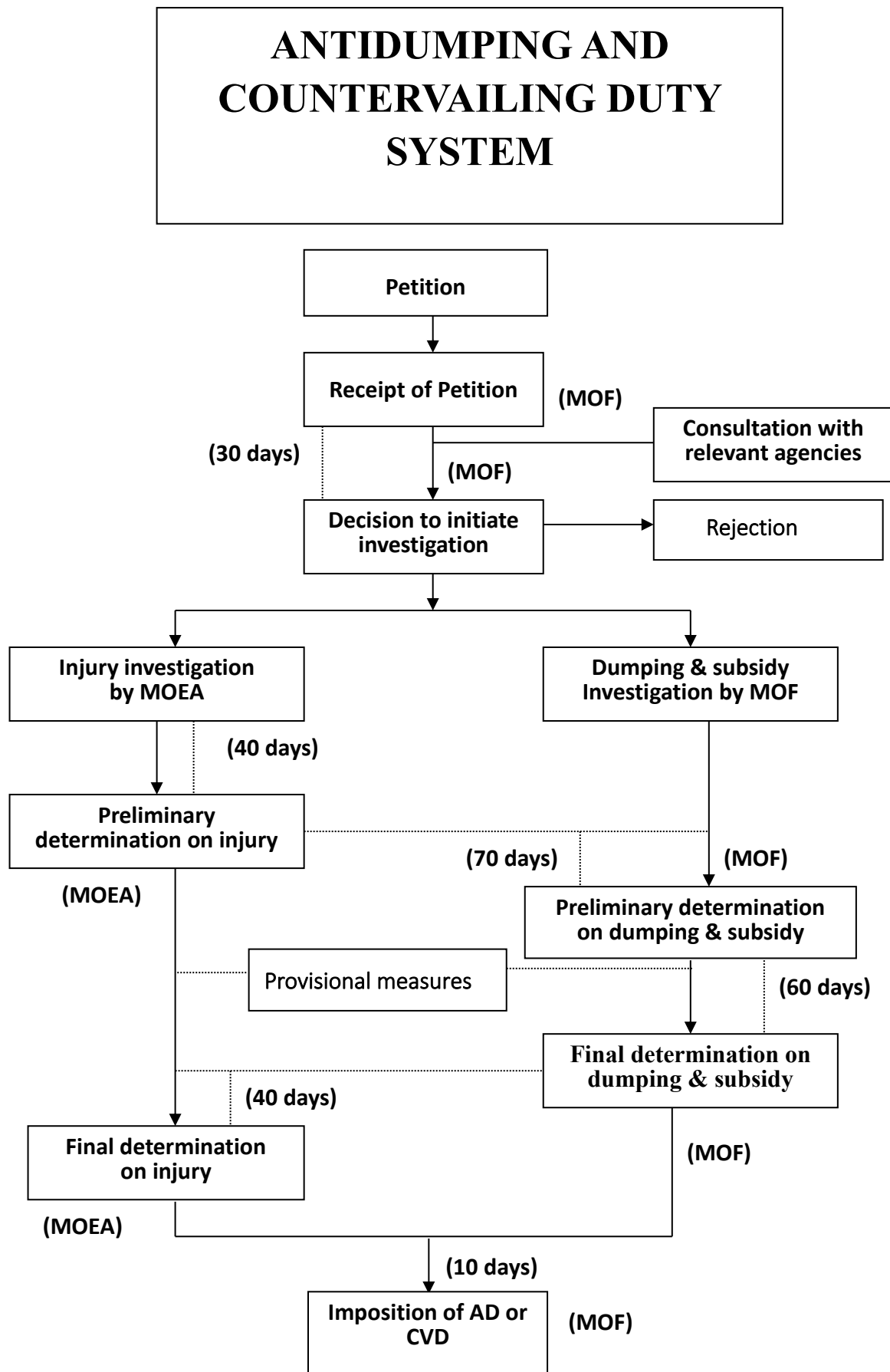
If you have any questions about this case, please contact the following correspondents.

Mr. Chiu (Shiuan-Ping Chiu) Tel: 886-2-2351-0271 ext. 398

Mr. Lin (Shin-shan Lin) Tel: 886-2-2351-0271 ext. 394

The Regulations Governing the Implementation of the Imposition of Countervailing and Anti-Dumping Duties can be found on the website: <https://gov.tw/jCt>

This is a flowchart of the investigation procedure.



* Days between events shown above may be extended up to one half longer, if necessary.